

POWER / CAN Cable

Model Name	BMW Easy Access
Latest Firmware Date	2017 - 06 - 09
Manual Version	Rev. 1.1
Manual Release Date	2017 - 06 - 30



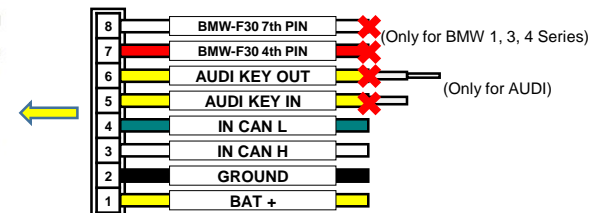
No.1	No.2	No.3	No.4	No.5	No.6	Car Models
OFF(▲)	OFF(▲)	OFF(▲)	OFF(▲)	OFF(▲)	OFF(▲)	1, 3, 4 Series(F20, F30, F32)
ON(♥)	OFF(▲)	OFF(▲)	OFF(▲)	OFF(▲)	OFF(▲)	5 Series(F10) *6-Pin LVDS(2013+)
OFF(▲)	ON(♥)	OFF(▲)	OFF(▲)	OFF(▲)	OFF(▲)	5 Series(F10) *4-Pin LVDS(-2012)
OFF(▲)	OFF(▲)	OFF(▲)	ON(♥)	OFF(▲)	OFF(▲)	2017 5 Series(G30) NBT EVO
OFF(▲)	OFF(▲)	OFF(▲)	ON(♥)	OFF(▲)	ON(♥)	2017 5 Series(G30) NBT EVO (Gentleman switch option ※ If sometimes easy access function does not work)

Button	Operation
Push to the Left(◁)	Push the dial to the left 5 times, quickly.

A close-up photograph of the interior door panel of a vehicle. The panel is dark grey or black with a textured surface. A silver-colored door handle is visible at the top. Below the handle, there are three rectangular buttons. The leftmost button is labeled 'a' and has a red 'LOCK' indicator. The middle button is labeled 'b' and has a '1' indicator. The rightmost button is labeled 'c' and has a '2' indicator. The buttons are set into a recessed area of the panel.

Button	Function
Memory No.2(Ⓐ)	Save a comfortable position of the seat, when you get out of the car.
Memory No.1(Ⓑ)	Save a comfortable position of the seat, when you get in the car.

Driver's seat is moved between position No.1 and position No.2 automatically, when you turn on the ignition.
when you turn off the ignition and open door.



Installation Manual

BMW Easy Access Seats 5 Series(G30) **2017 NBT EVO**

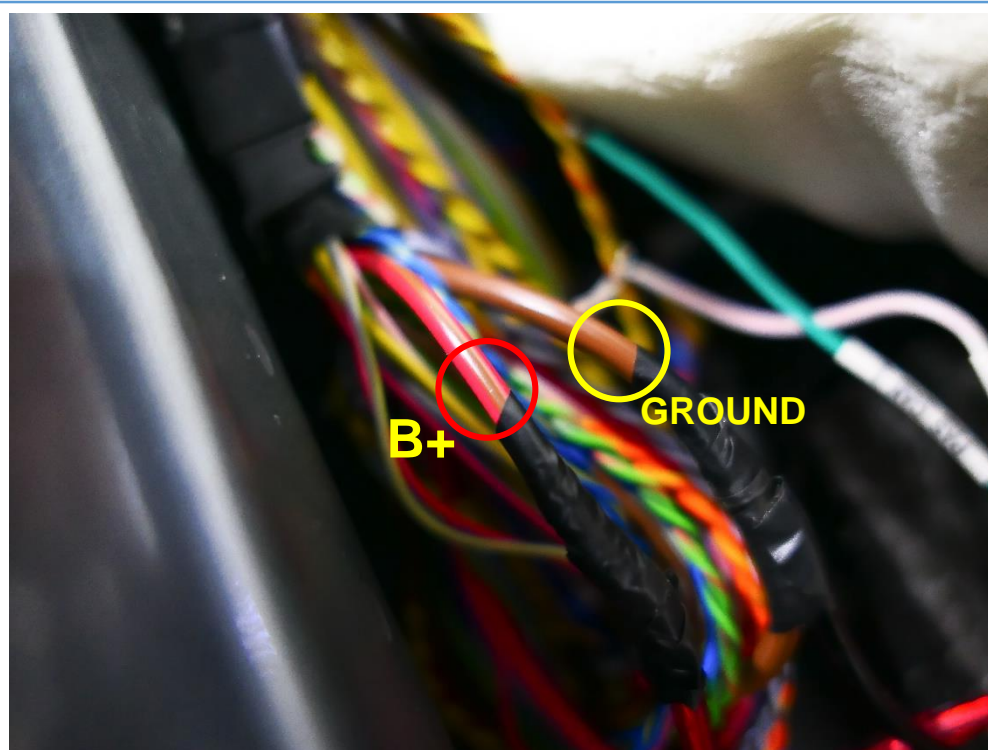






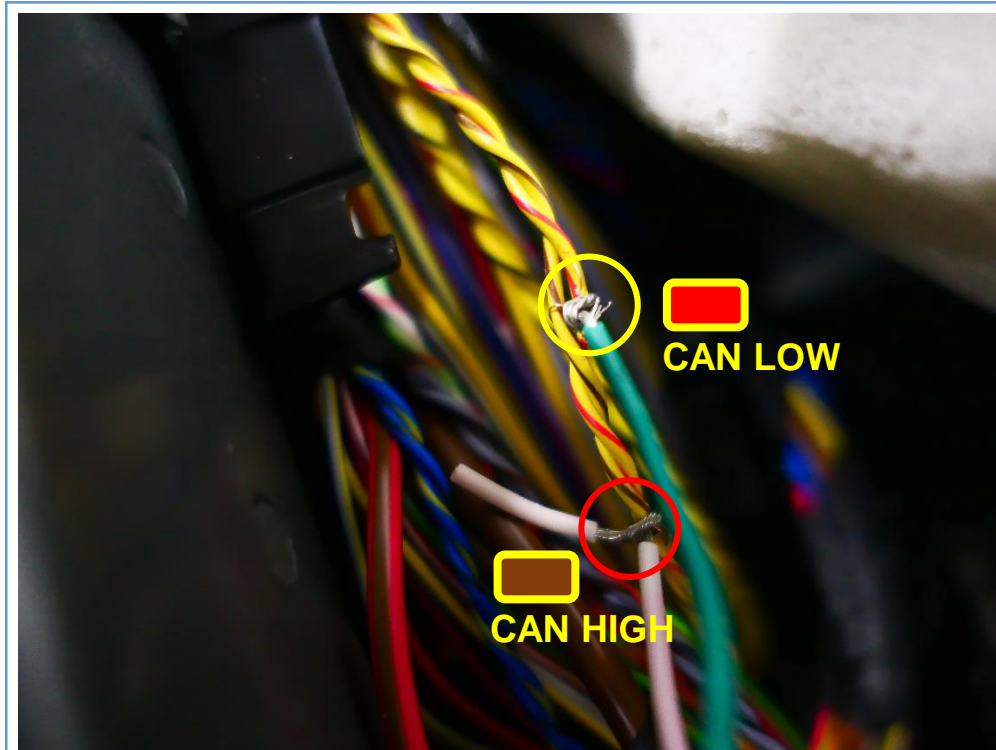
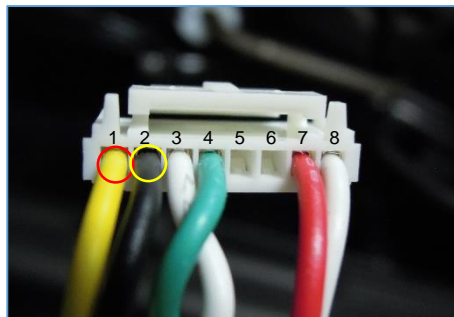
1) Remove the 'Side Step Curver' beside passenger seat





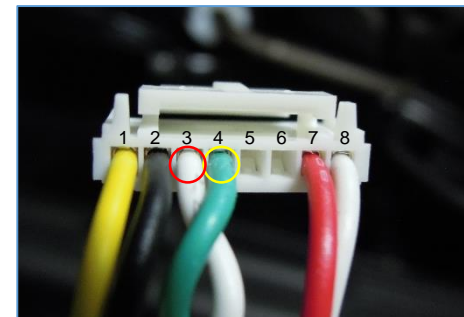
2) From under the carpet installation

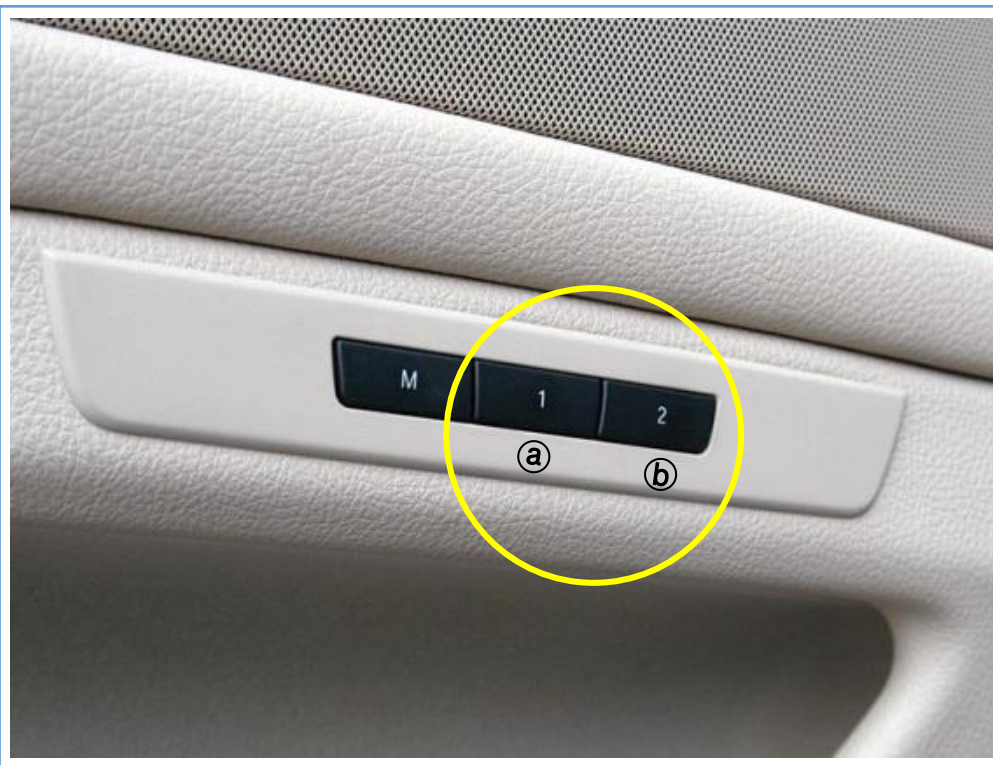


- 3)  B+ (Red / Brown)
 GROUND (Brown)
 < POWER Connection >



- 4)  CAN HIGH (Yellow / Red)
 CAN LOW (Yellow / Red)
 < CAN HIGH / LOW Connection >





8) Driver's seat is moved to the memory position No.1(ⓑ) automatically, when you turn on the ignition.

The seat is moved back to the memory position No.2(ⓐ), when you turn off the ignition and open door