

BMW Easy Access Seats

Components



Module

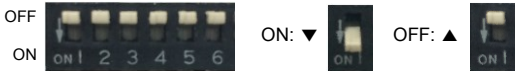


POWER / CAN Cable

Version Information

Model Name	BMW Easy Access
Latest Firmware Date	2014 - 05 - 08
Manual Version	Rev. 1.0
Manual Release Date	2014 - 05 - 08

Dip Switch Settings



No.1	No.2	No.3	No.4	No.5	No.6	Car Models
OFF(▲)	OFF(▲)	OFF(▲)	OFF(▲)	OFF(▲)	OFF(▲)	1, 3, 4 Series(F20, F30, F32)
ON(▼)	OFF(▲)	OFF(▲)	OFF(▲)	OFF(▲)	OFF(▲)	5 Series(F10) *6-Pin LVDS(2013+)
OFF(▲)	ON(▼)	OFF(▲)	OFF(▲)	OFF(▲)	OFF(▲)	5 Series(F10) *4-Pin LVDS(-2012)

Easy Access 'ON-OFF' Settings



Button	Operation
Push to the Left(<)	Push the dial to the left 5 times, quickly.

Save the seat position



Button	Function
Memory No.2(Ⓐ)	Save a comfortable position of the seat, when you get out of the car.
Memory No.1(Ⓑ)	Save a comfortable position of the seat, when you get in the car.
Driver's seat is moved between position No.1 and position No.2 automatically, when you turn on or turn off the ignition.	

Connector Specification



8	BMW-F30 7th PIN		(Only for BMW 1, 3, 4 Series)
7	BMW-F30 4th PIN		
6	AUDI KEY OUT		(Only for AUDI)
5	AUDI KEY IN		
4	IN CAN L		
3	IN CAN H		
2	GROUND		
1	BAT +		

Installation Manual

BMW Easy Access Seats

1 Series(F20) & 3 Series(F30) & 4 Series(F32)





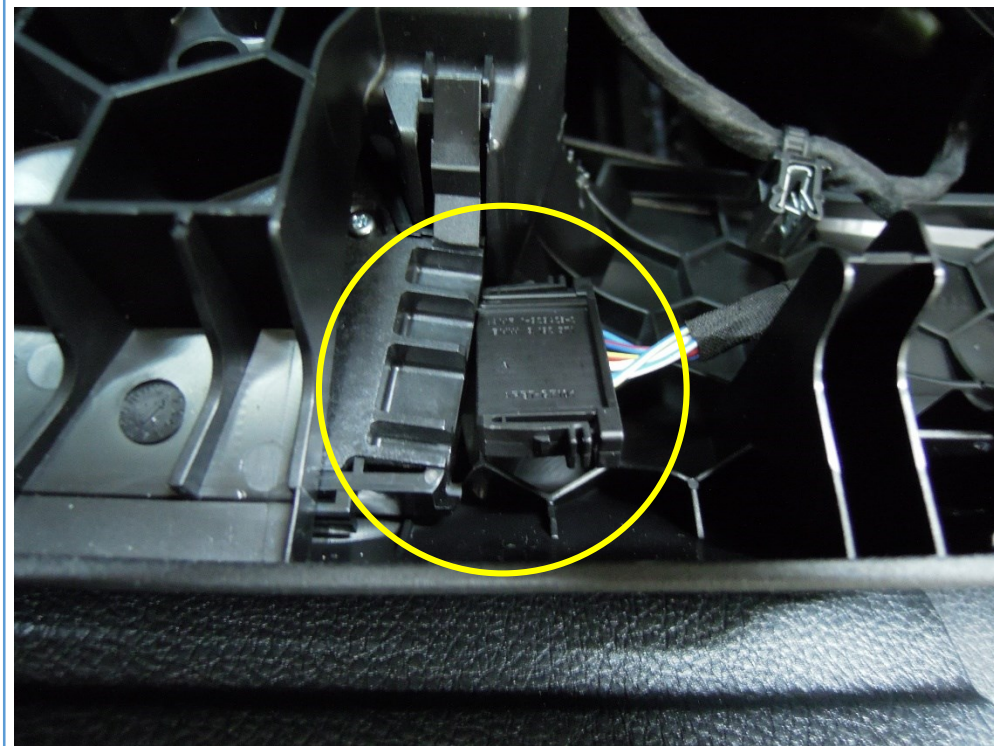
1) Remove the 'AIRBAG' cap in driver's seat.



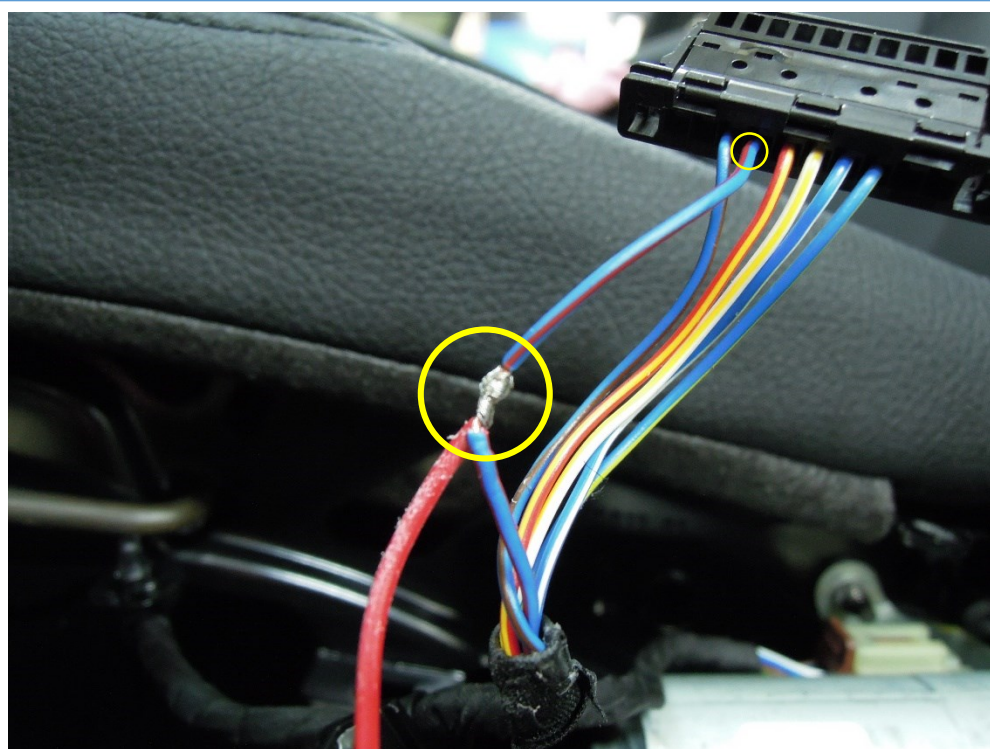
2) Remove the '25T screw' holding the side cover.



3) Remove the seat side cover.



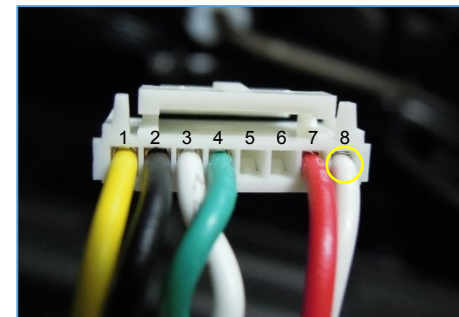
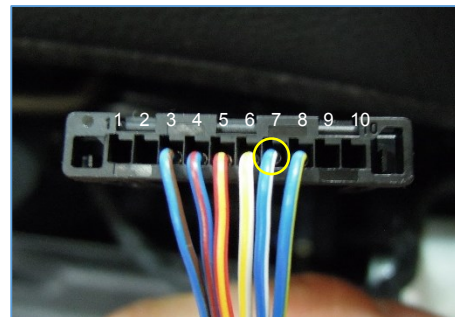
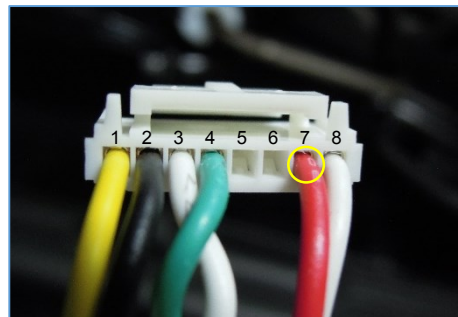
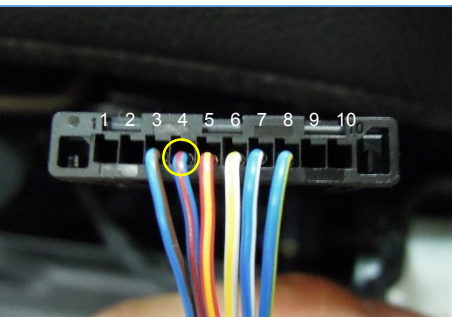
4) Unplug a connector of the seat memory.

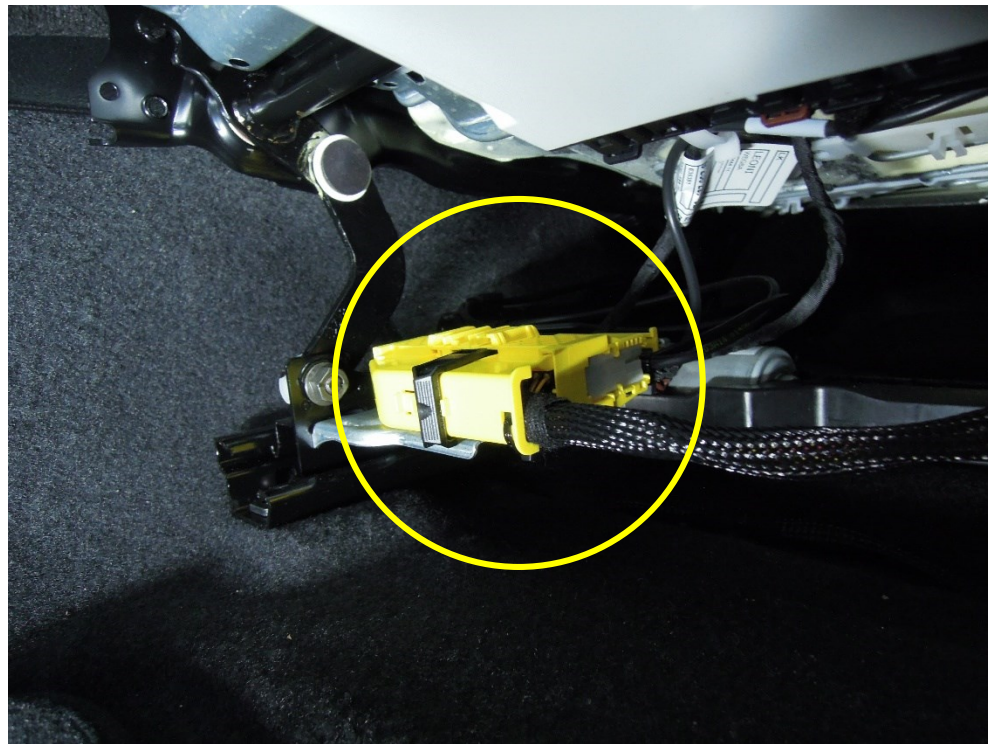


5) Splice the '4th PIN(No.7 / Red) wire' to 'No.4 wire(Blue/Red)' of the 10-pin connector.
< BMW-F30 4th PIN connection >



6) Splice the '7th PIN(No.8 / White) wire' to 'No.7 wire(Blue/White)' of the 10-Pin connector.
< BMW-F30 7th PIN connection >

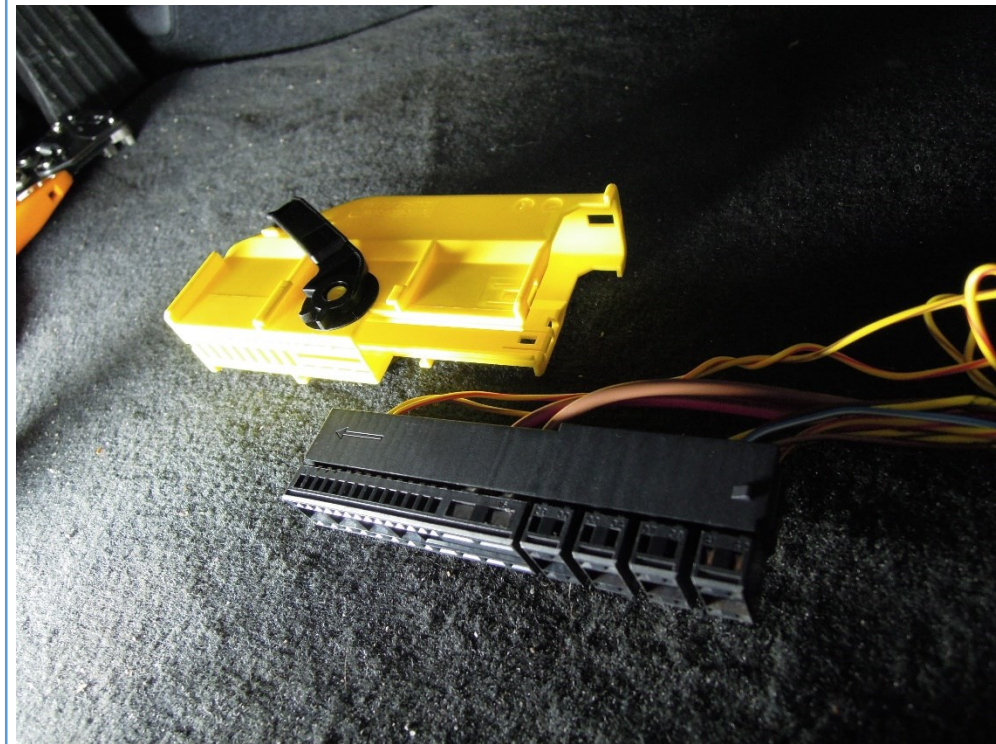




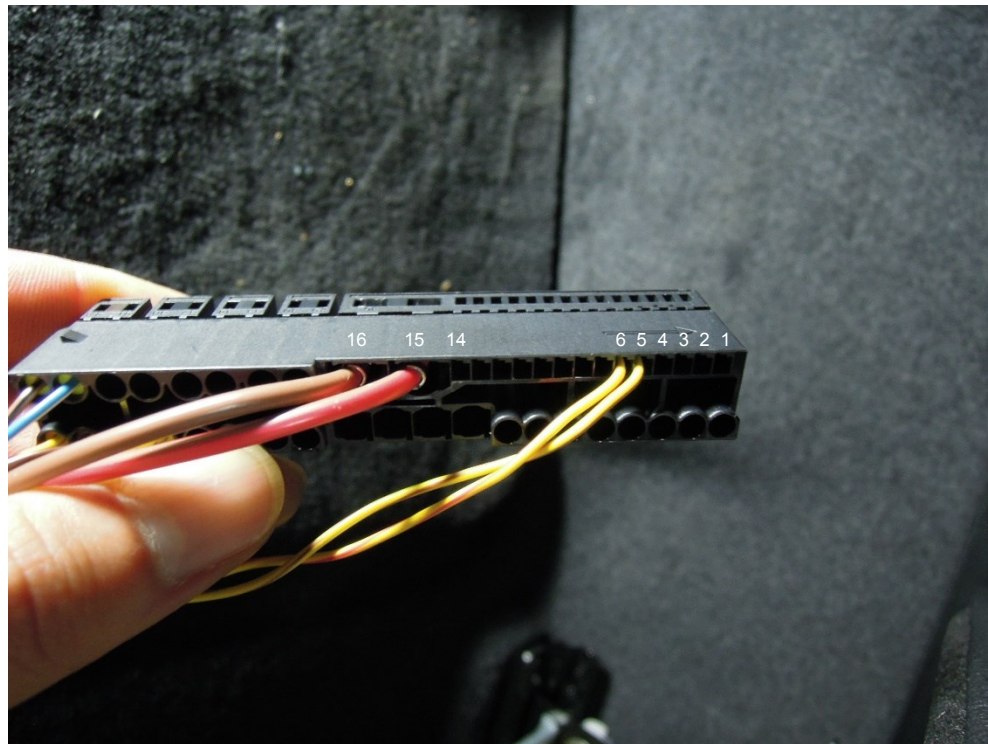
7) Unplug the '44-pin connector(Yellow)' under the driver's seat.

※ CAUTION ※

You have to unplug the connector after turn off the ignition.



8) Separate the harness from the connector.



9) Specification of the 44-pin connector

< CAN HIGH & LOW >

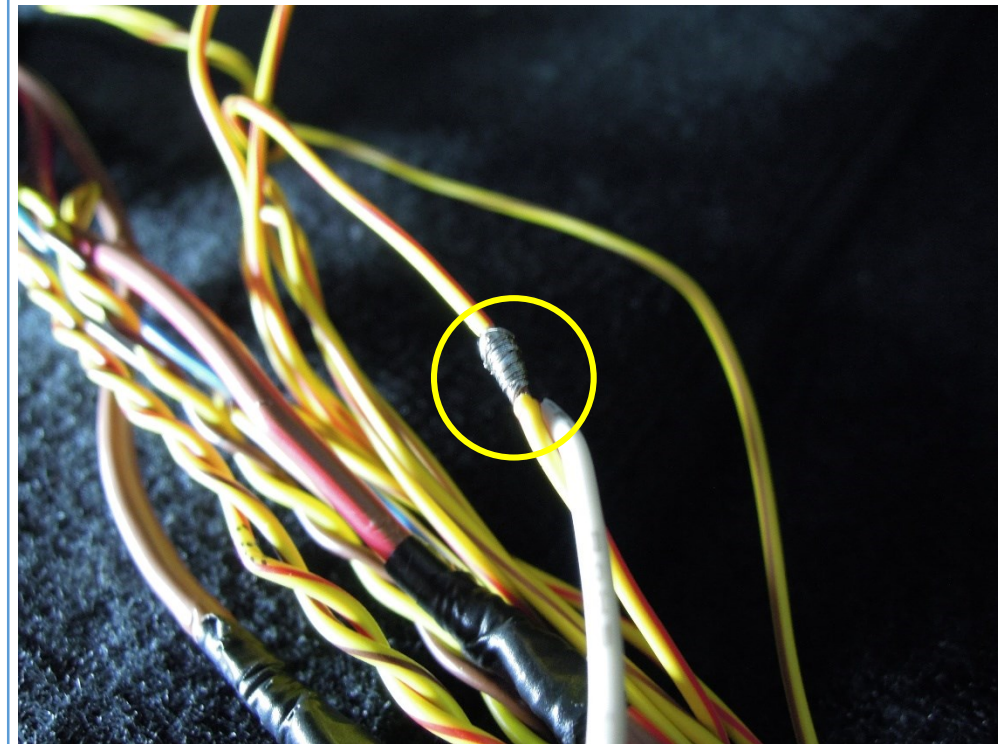
No.5-pin(Yellow/Brown) = CAN LOW

No.6-pin(Yellow/Red) = CAN HIGH

< POWER & GND >

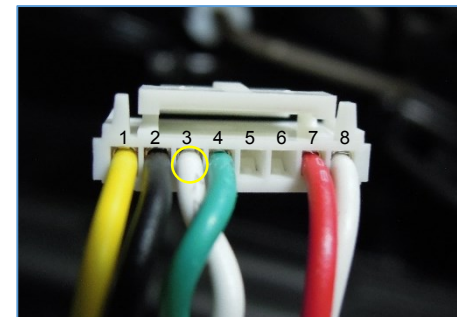
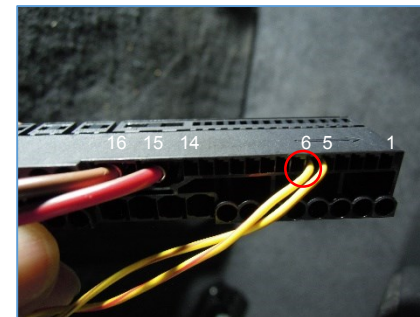
No.15-pin(Red/Brown) = 12V POWER

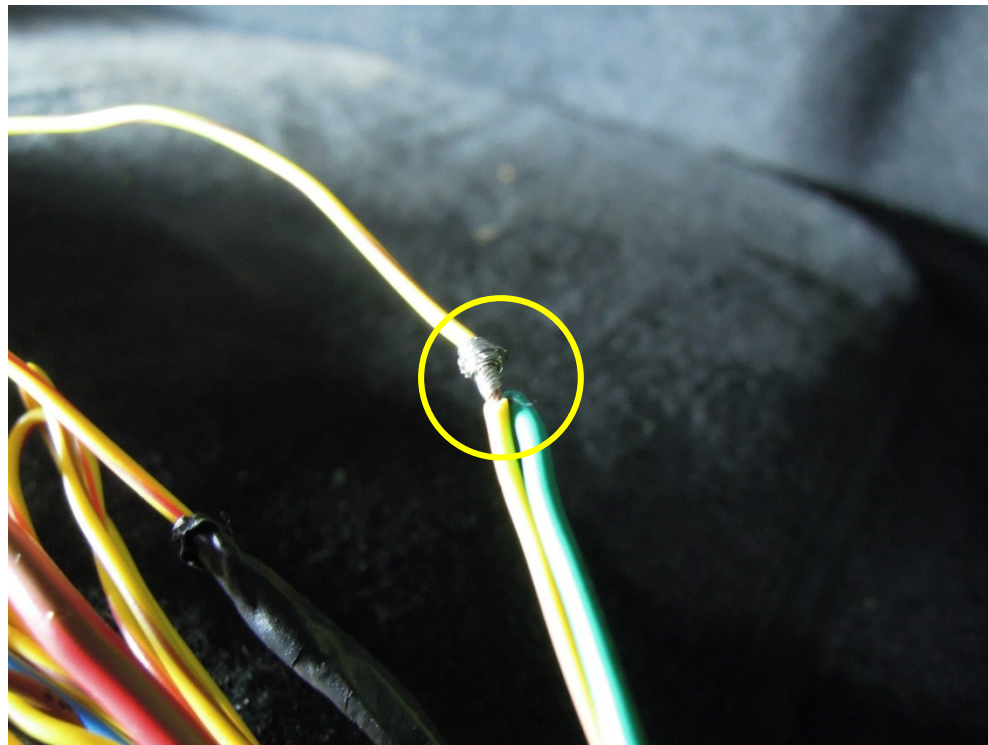
No.16-pin(Brown) = GROUND(GND)



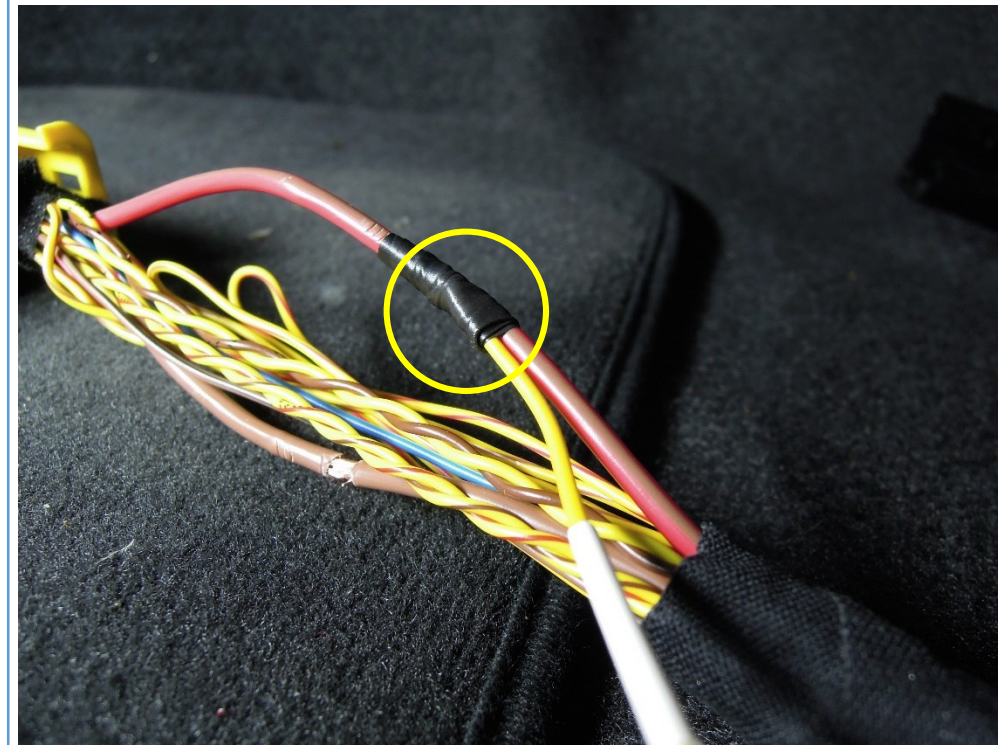
10) Splice the 'IN CAN H(No.3 / White) wire' to 'No.6 wire(Yellow/Red)' of the 44-pin connector.

< CAN HIGH connection >

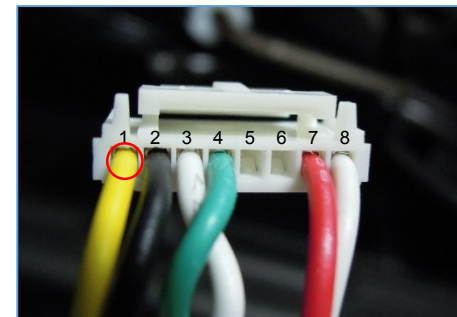
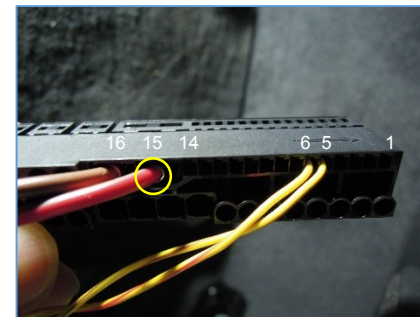
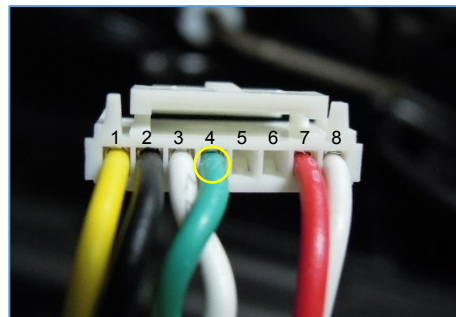
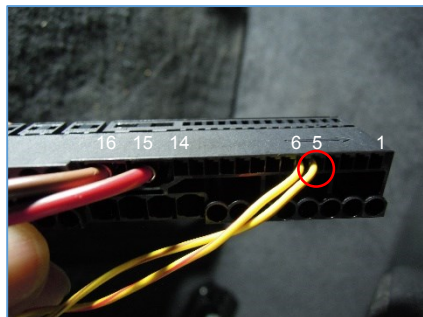


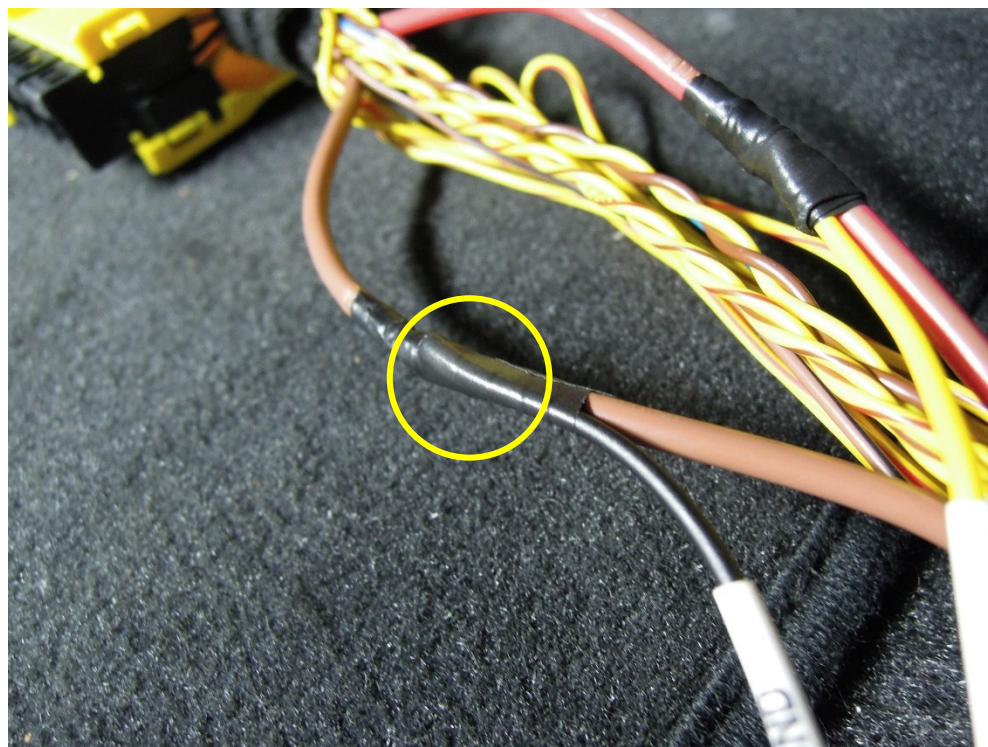


11) Splice the 'IN CAN L(No.4 / Green) wire' to 'No.5 wire(Yellow/Brown)' of the 44-pin connector.
< CAN LOW connection >

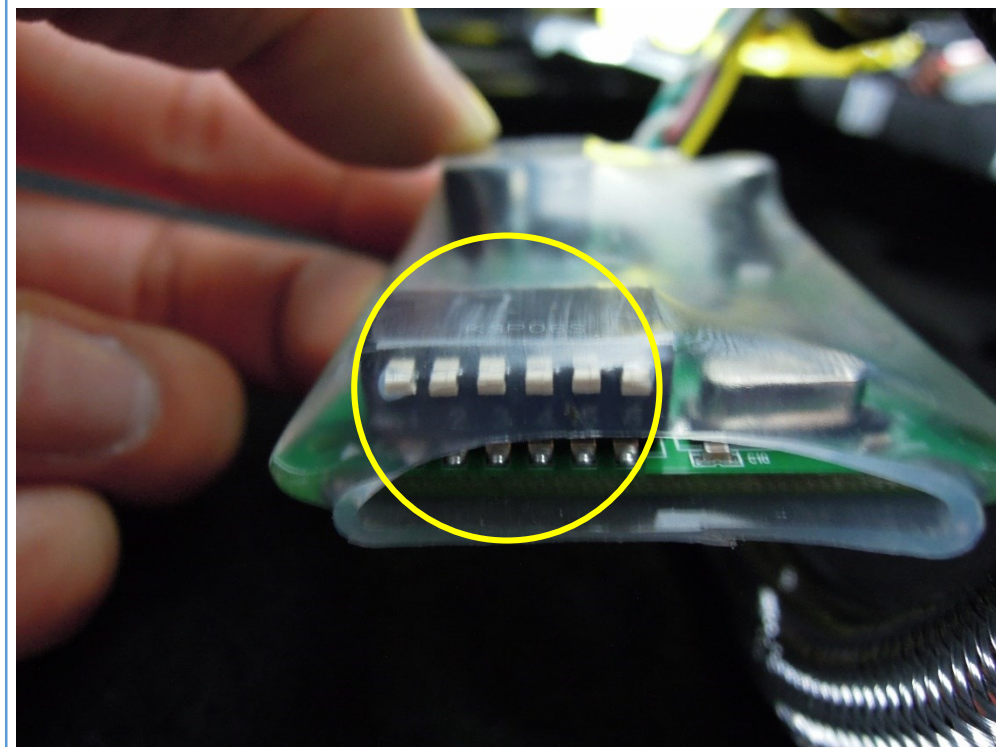


12) Splice the 'BAT+(No.1 / Yellow) wire' to 'No.15 wire(Red/Brown)' of the 44-pin connector.
< POWER connection >

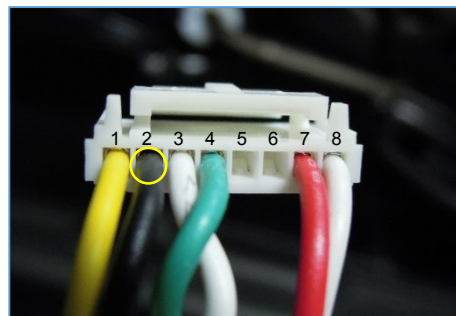
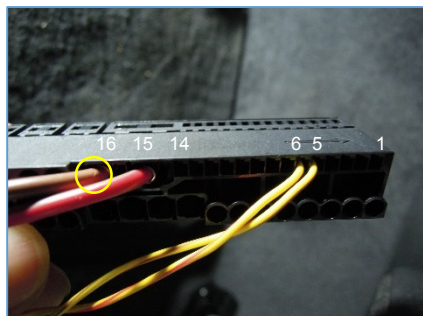




13) Splice the 'GROUND(No.2 / Black) wire' to
'No.16 wire(Brown)' of the 44-pin connector.
< GROUND connection >

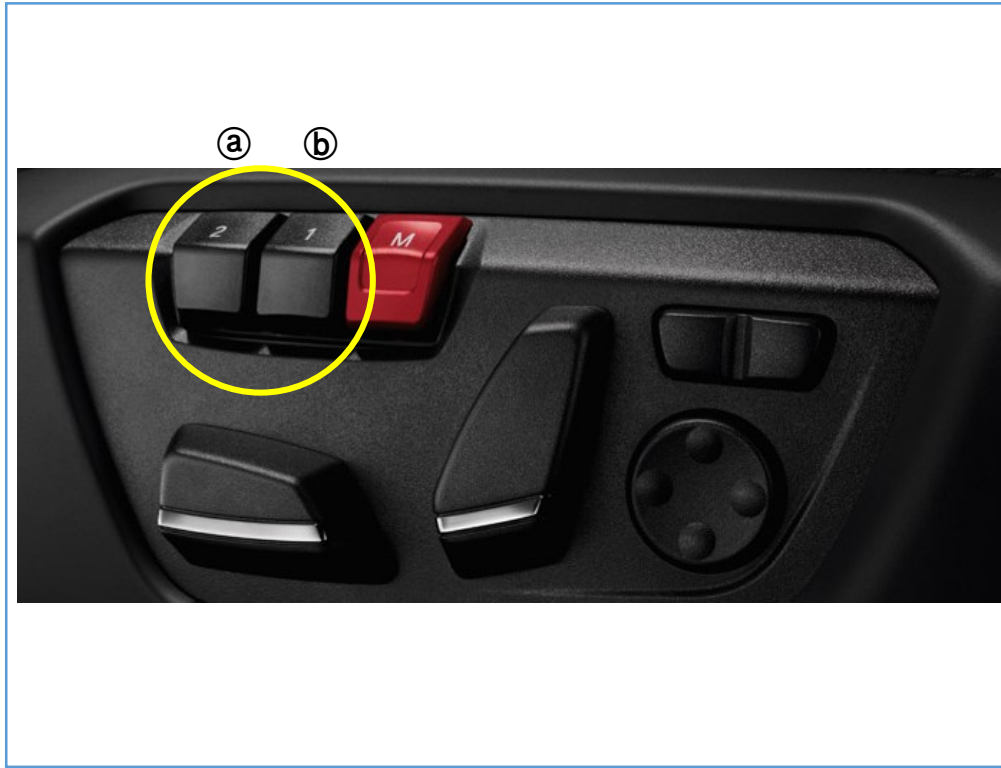


14) Set the DIP switch for BMW 1, 3, 4 Series.





15) Fix the easy access module under the seat.



16) Driver's seat is moved to the memory position No.1(**b**) automatically, when you turn on the ignition.

The seat is moved back to the memory position No.2(**a**), when you turn off the ignition.